



Firs Lane, Palmers Green, London, N13  
Chain Free £575,000 Freehold

**Anthony Webb**  
ESTATE AGENTS



# Firs Lane, Palmers Green, London, N13

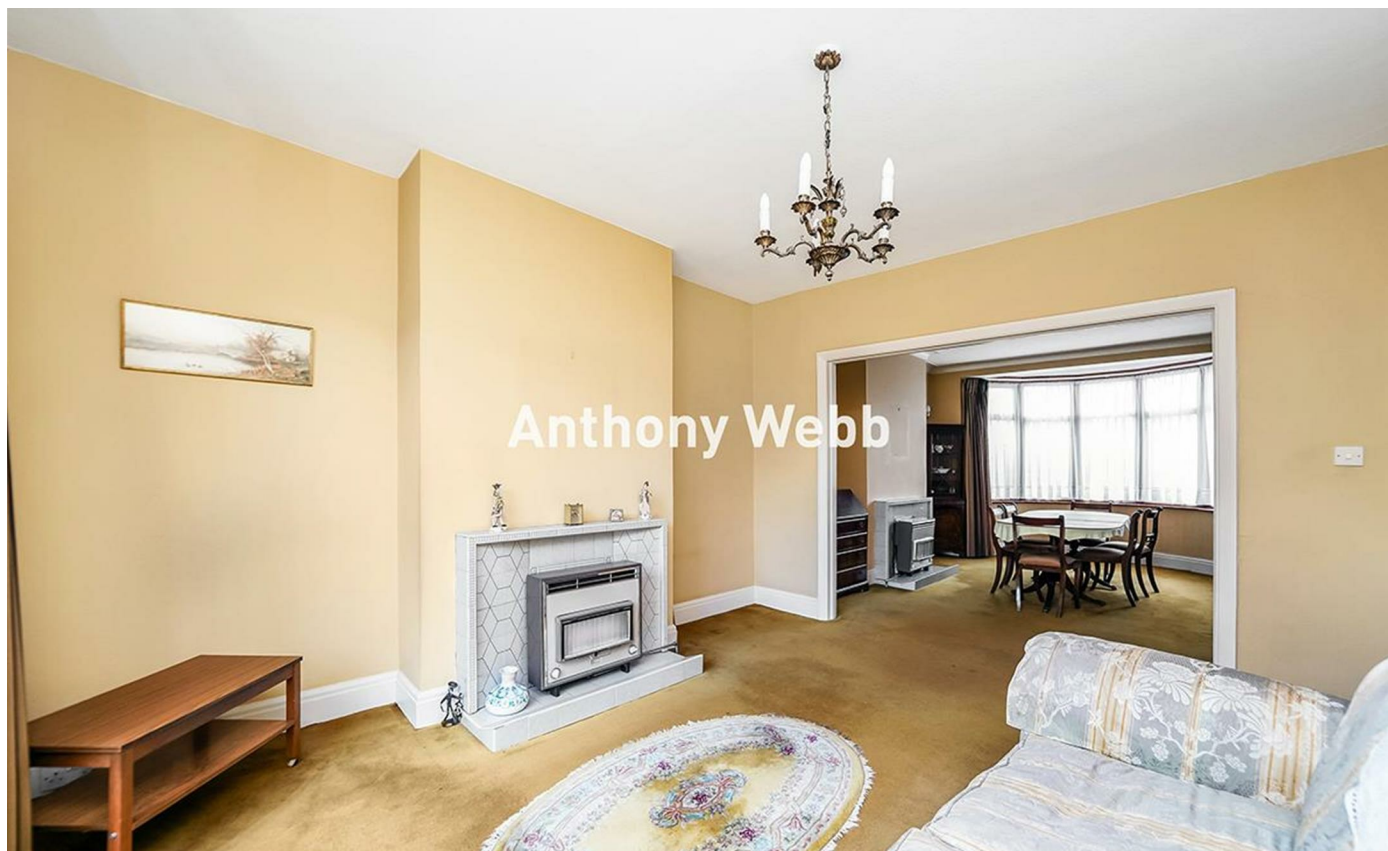
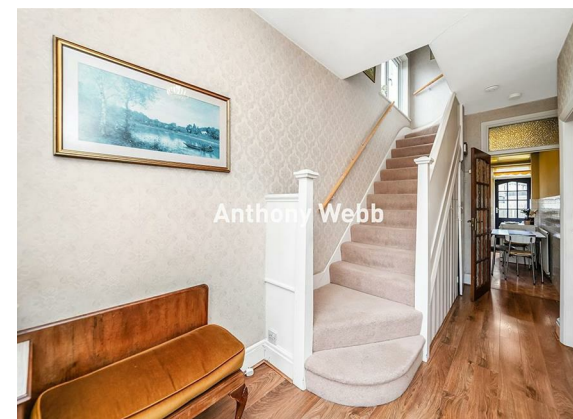
Well presented three bedroom "George Reed" built 1930s end of terrace house with garage to side. The property requires updating and offers great potential to extend over the garage and into the loft space to create a wonderful family home.

Firs Lane is a popular residential turning located off Hedge Lane offering easy access to both Palmers Green and Winchmore Hill's high roads amenities, bus routes and mainline stations into Moorgate. Southgate high road and underground station is also a short ride away via the W6 bus route. There are several schools nearby including Firs Farm Primary school and Winchmore Secondary school.

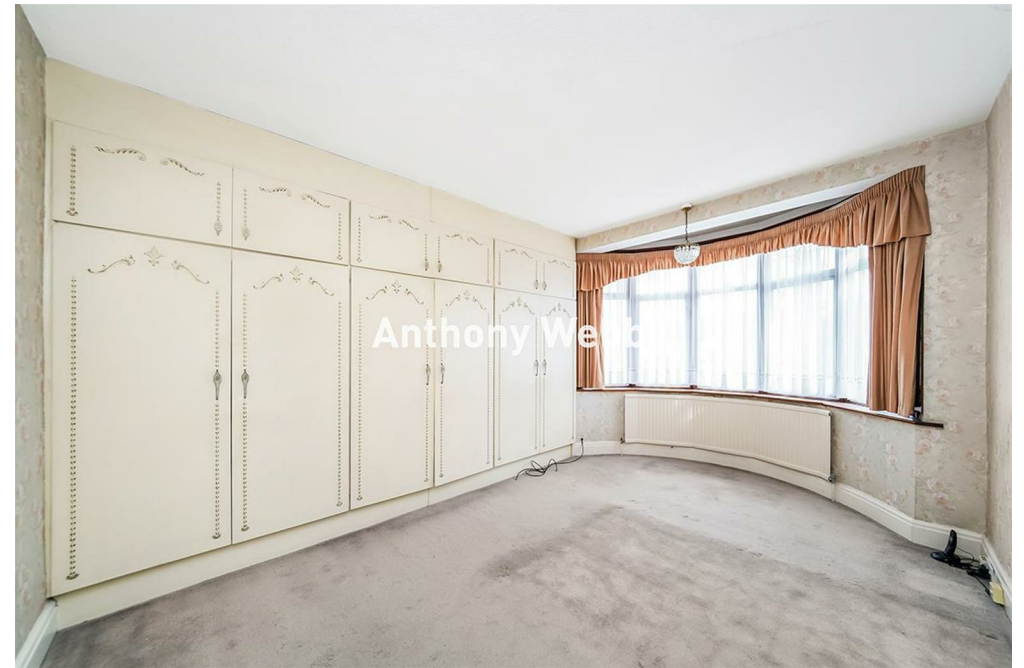
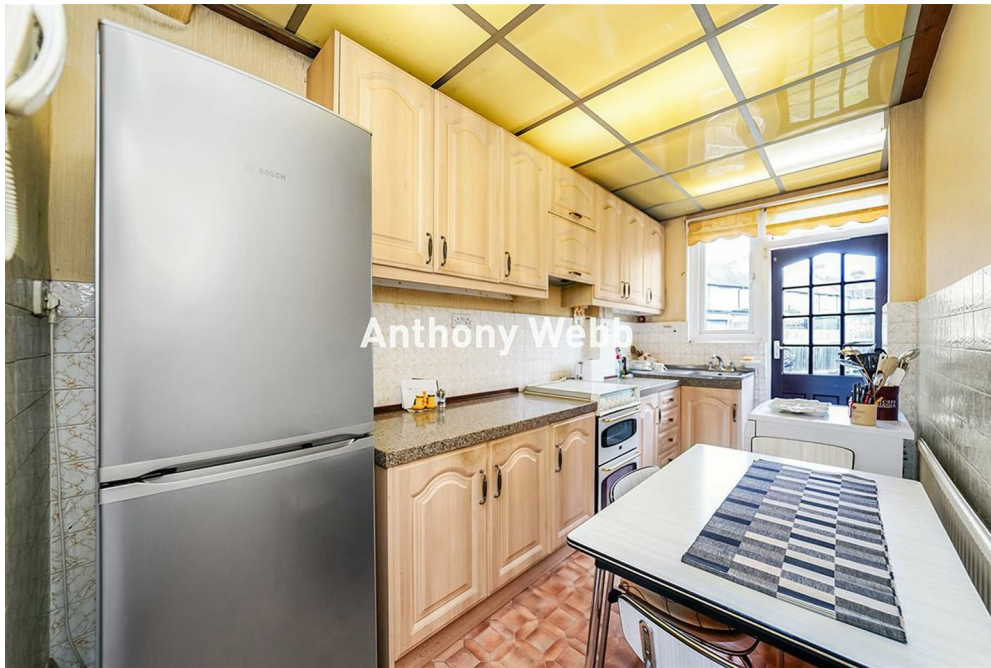
Porch • Hallway with laminate flooring and original staircase • Spacious through lounge with bay window and sliding doors to garden • Kitchen • First floor landing with access to loft space • Two double bedrooms with fitted wardrobes • One single bedroom with bay window • Bathroom and separate w.c • Gas central heating • West facing rear garden with outside w.c • Good size front garden with lawn and driveway leading to a garage to side with automatic door.

Enfield Council Tax Band E

- Three bedrooms
- 1930s George Reed built end terrace house
- Through Lounge
- Kitchen
- Bathroom+separate w.c
- Gas central heating
- Garage to side+drive
- Front and rear gardens



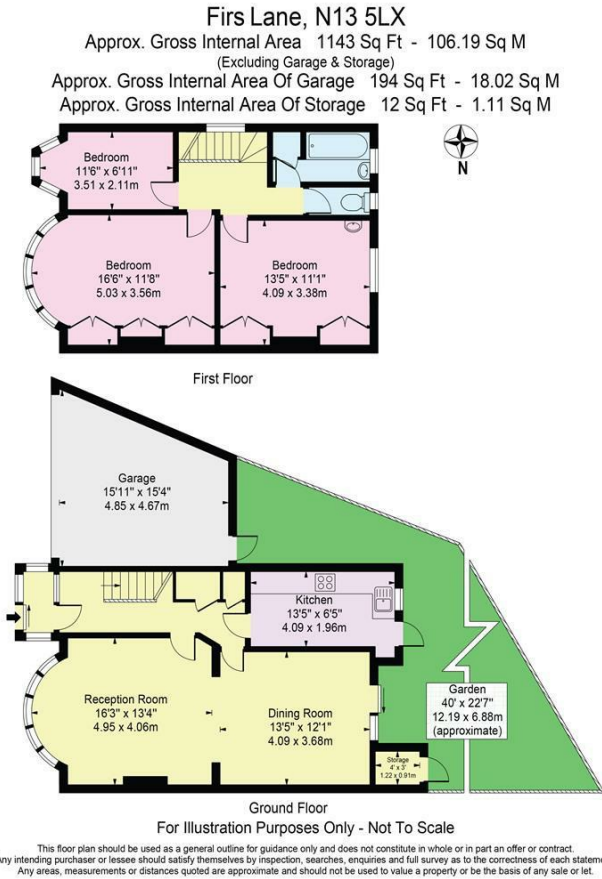
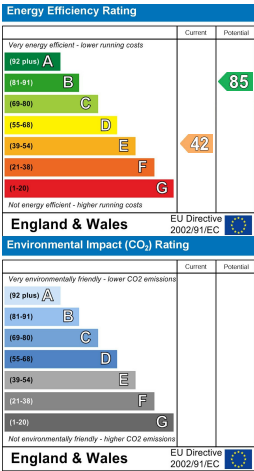
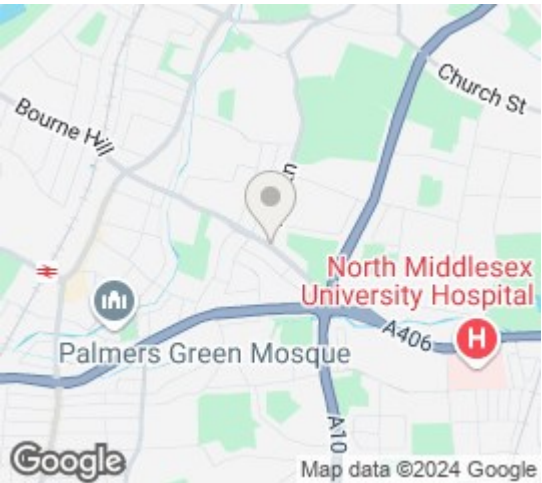






Firs Lane  
Palmers Green  
London  
N13 5LX

Tenure: Freehold  
Gross Internal Area: 1143.00 sq ft



Property particulars as supplied by Anthony Webb Estate Agents are set out as a general outline in accordance with the Property Misdescriptions Act (1991) only for the guidance of intending purchasers of lessees, and do not constitute in whole or in part an offer or contract. Details are given without any responsibility, and any intending purchasers, lessees or third parties should not rely on them as inspection or otherwise as to the correctness of each of them. We have not carried out a structural survey and the services, appliances and specific fittings have not been tested. All photographs, measurements, floor plans and distances referred to are given as a guide only and should not be relied upon for the purchase of carpets or any other fixtures statements or representations of fact, but must satisfy themselves by or of fittings, gardens, roof terraces, balconies and communal gardens as well as tenure and lease details cannot have their accuracy guaranteed for intending purchasers. Lease details, service ground rent (where applicable) are given as a guide only and should be checked and confirmed by your solicitor prior to exchange of contracts. no person in the employment of Anthony Webb has any authority to make any representation or warranty whatever in relation to this property.

348 Green Lanes, Palmers Green, London N13 5TJ  
020 8882 7888  
palmersgreen@anthonywebb.co.uk  
anthonywebb.co.uk

